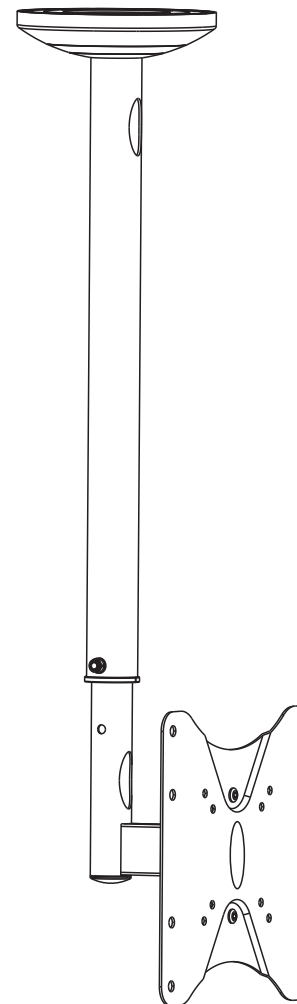


Full Motion LED, LCD TV Ceiling Mount

Maintenance

- Check that the bracket is secure and safe to use at regular intervals(at least every three months).
- Please contact your distributor if you have any questions.



CAUTION: DO NOT EXCEED RATED LISTED WEIGHT. SERIOUS INJURY OR PROPERTY DAMAGE MAY OCCUR!



75x75/100x100
200x100/200x200



25kg
(55lbs)
RATED

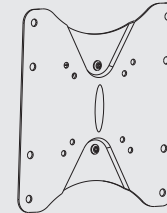
NOTE: Read the entire instruction manual before you start installation and assembly.

WARNING

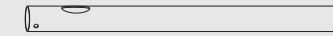
- Do not begin the installation until you have read and understood all the instructions and warnings contained in this installation sheet. If you have any questions regarding any of the instructions or warnings, please contact your local distributor.
- This mounting bracket was designed to be installed and utilised ONLY as specified in this manual. Improper installation of this product may cause damage or serious injury.
- This product should only be installed by someone with good mechanical ability who has basic building experience and fully understands this manual.
- Make sure that the supporting surface will safely support the combined weight of the equipment and all attached hardware and components.
- If mounting to wood joist ceiling, make sure that mounting screws are anchored into the center of the studs. The use of a stud finder is highly recommended.
- Always use an assistant or mechanical lifting equipment to safely lift and position the equipment.
- Tighten screws firmly, but do not over tighten. Over tightening can cause damage to the items, This greatly reduces their holding power.
- This product is intended for indoor use only. Using this product outdoors could lead to product failure and personal injury.

Component Checklist

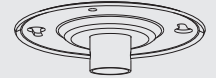
IMPORTANT: Ensure that you have received all parts according to the component checklist prior to installation. If any parts are missing or faulty, telephone your local distributor for a replacement.



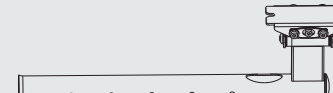
VESA plate (x1)
A



outer column (x1)
B



ceiling plate (x1)
D



inner column (x1)
C



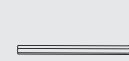
plastic cover (x1)
E



plastic bushing (x2)
F



D6 washer (x4)
G



Allen key (x1)
H



wrench (x1)
I



M6x50 (x2)
J

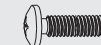


M6 nut (x2)
K

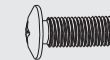
Package M



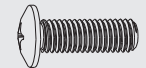
M4x14 (x4)
M-A



M5x14 (x4)
M-B



M6x14 (x4)
M-C



M8x20 (x4)
M-D



D5 washer (x4)
M-E

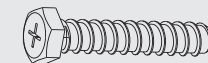


D8 washer (x4)
M-F



small spacer (x8)
M-G

Package W

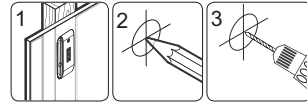
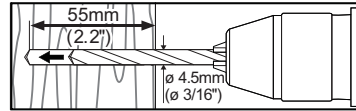
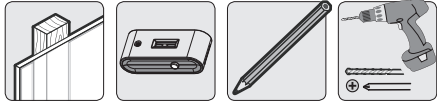


ST6.3x55 (x4)
W-A



concrete anchor (x4)
W-B

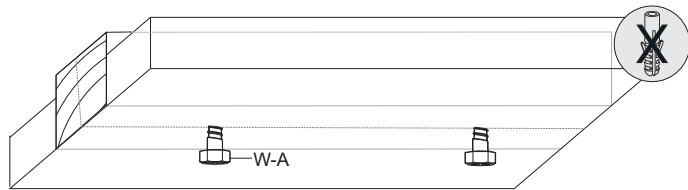
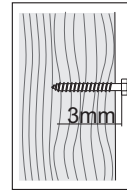
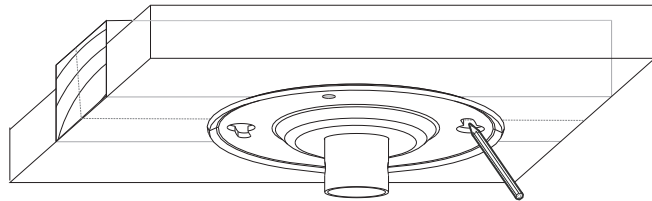
1a. For Wood Joist Ceiling Mounting



1 Find and mark the exact location of mounting holes

2

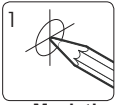
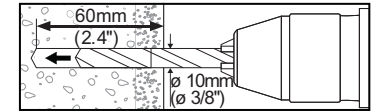
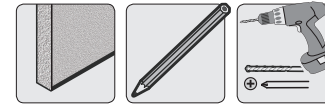
3 Drill two pilot holes



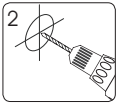
! WARNING

- Make sure that mounting screws are anchored into the center of the joist. The use of a stud finder is highly recommended.
- Installers are responsible to provide hardware for other types of mounting situations.
- Installers must verify that the supporting surface will safely support the combined weight of the equipment and all attached hardware and components.

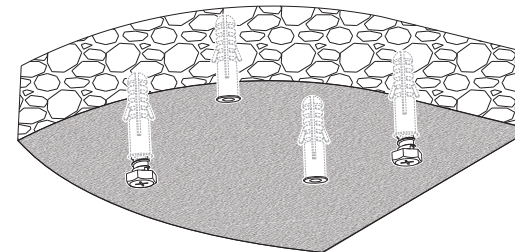
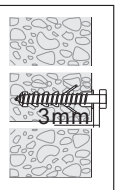
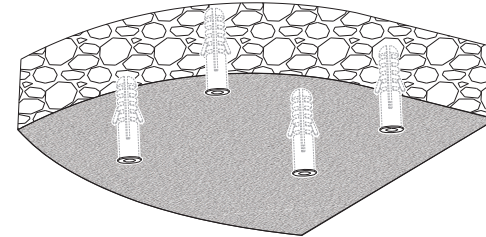
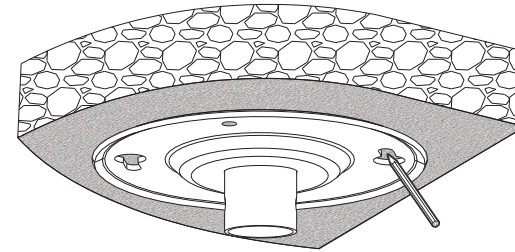
1b. For Solid Brick and Concrete Mounting



1 Mark the exact location of mounting holes



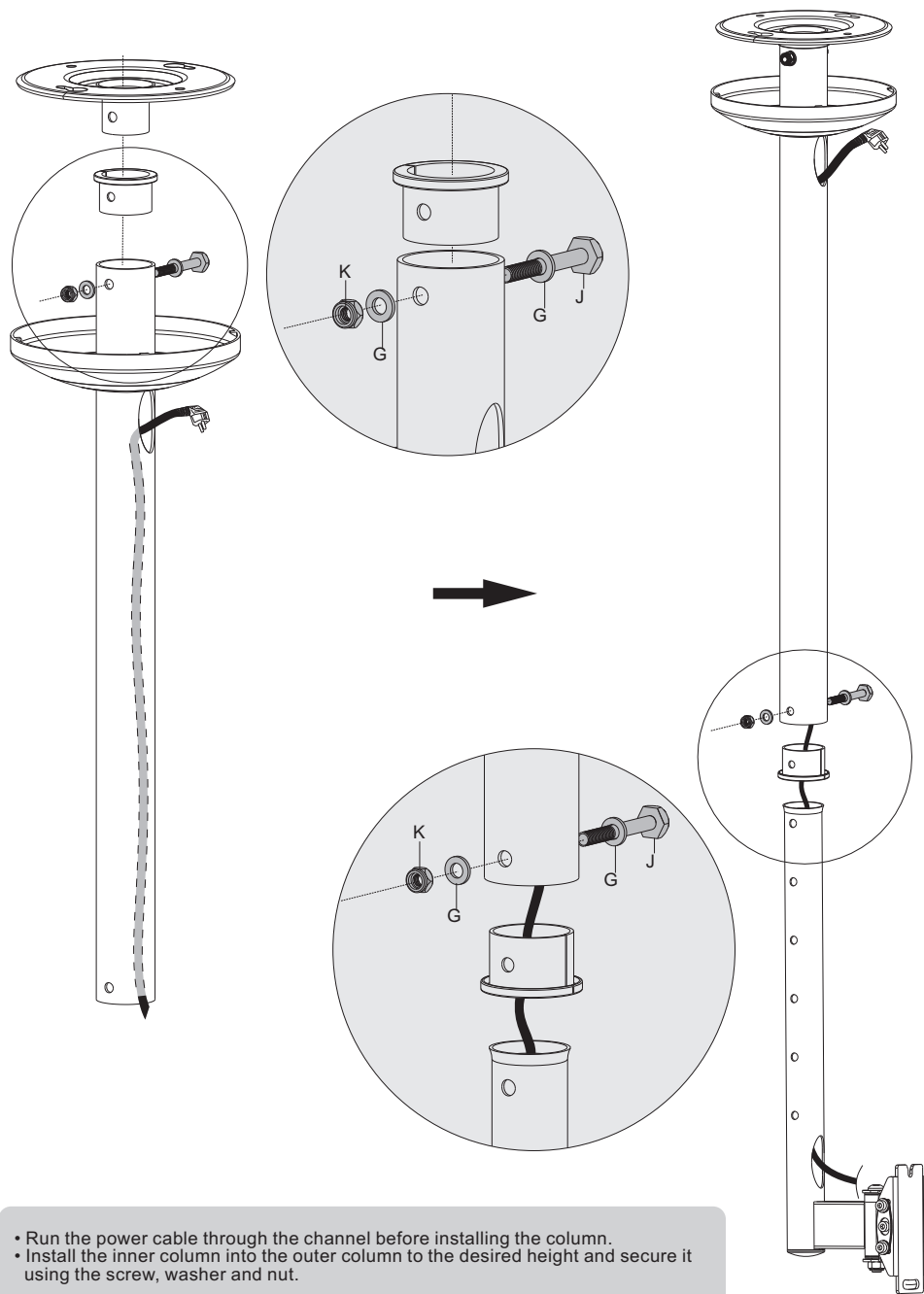
2 Drill four pilot holes



! WARNING

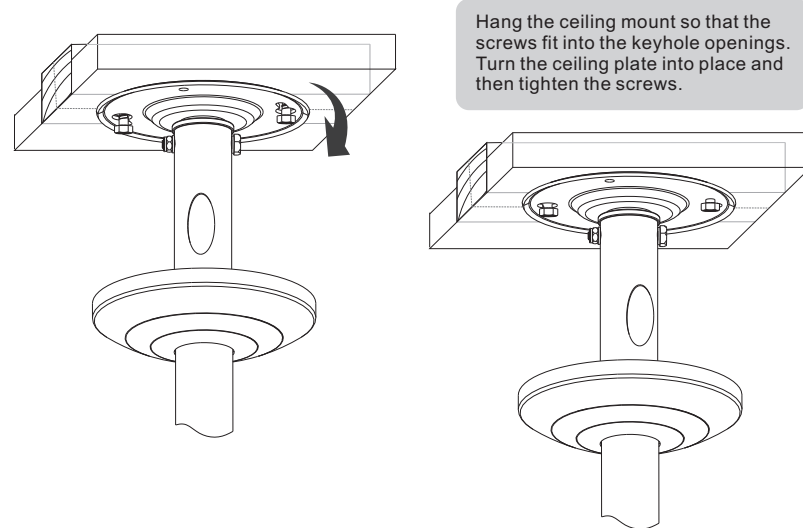
Installers must verify that the supporting surface will safely support the combined weight of the equipment and all attached hardware and components.

2. Installing the Column and the Plastic Cover

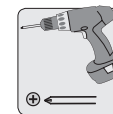


- Run the power cable through the channel before installing the column.
- Install the inner column into the outer column to the desired height and secure it using the screw, washer and nut.

3a. For Wood Joist Ceiling Mounting

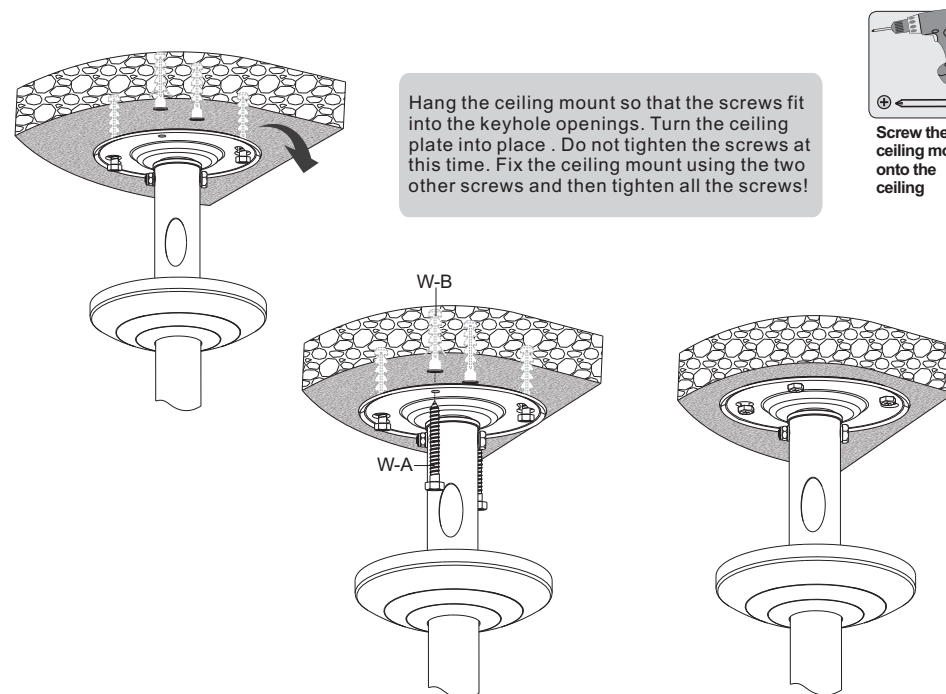


Hang the ceiling mount so that the screws fit into the keyhole openings. Turn the ceiling plate into place and then tighten the screws.

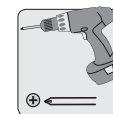


Screw the ceiling mount onto the ceiling

3b. For Solid Brick and Concrete Mounting

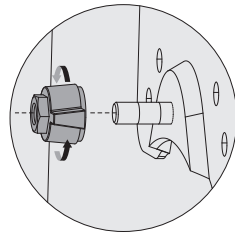
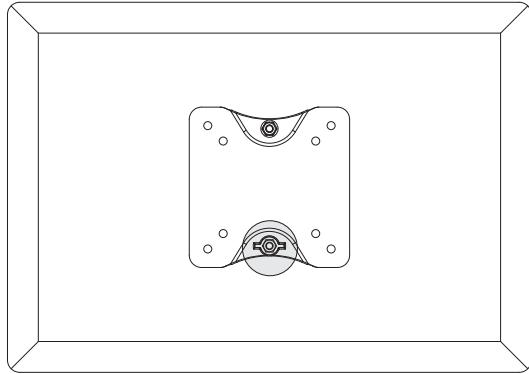


Hang the ceiling mount so that the screws fit into the keyhole openings. Do not tighten the screws at this time. Fix the ceiling mount using the two other screws and then tighten all the screws!

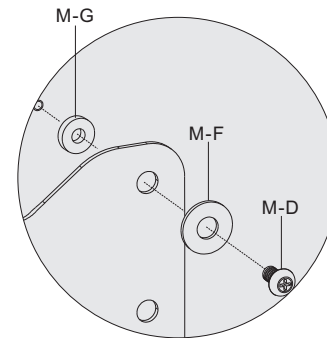
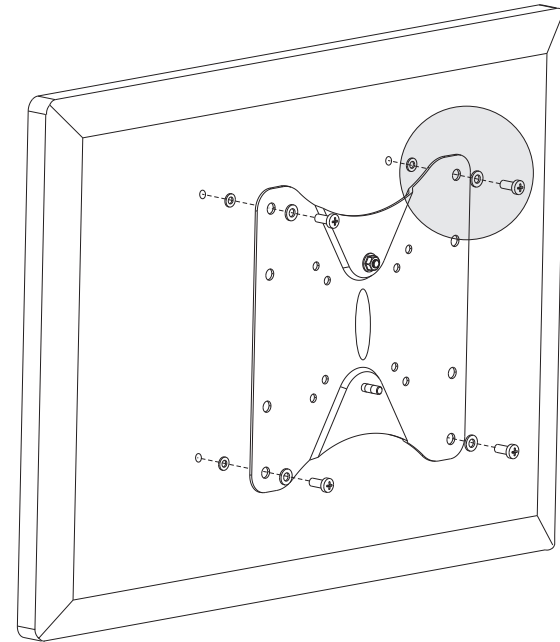
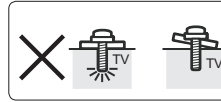
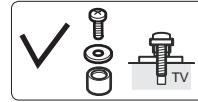
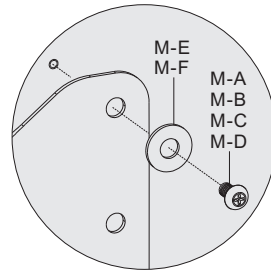
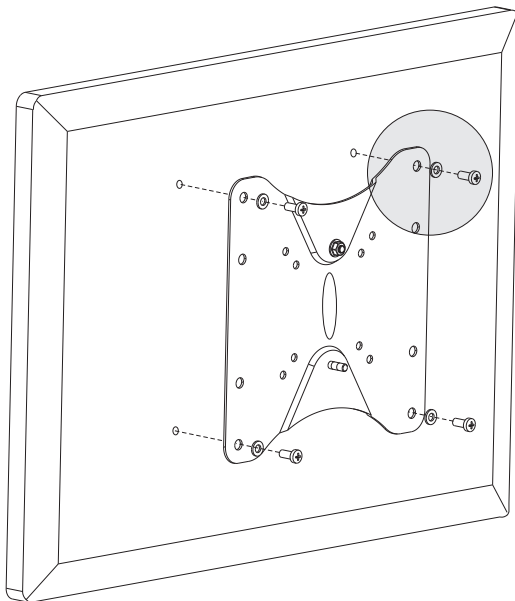
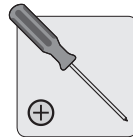
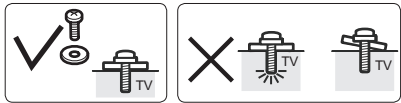


Screw the ceiling mount onto the ceiling

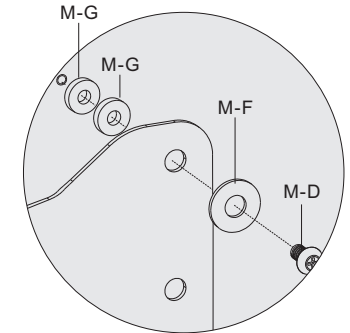
4. Installing the VESA Plate



Remove the plastic knob.



or

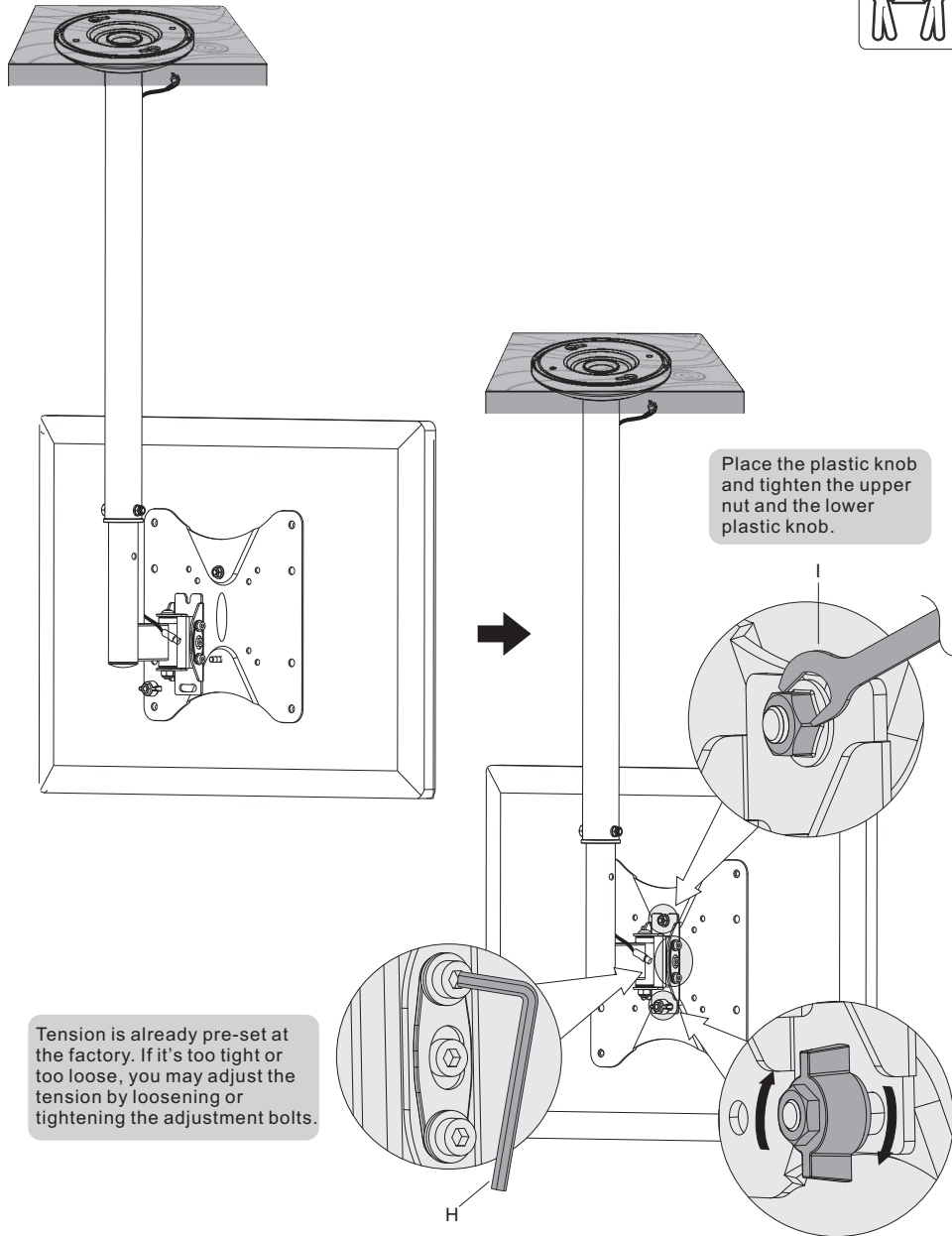


Note: Choose the appropriate screws, washers and spacers (if necessary) according to the type of screen. Screw the VESA plate onto the TV.

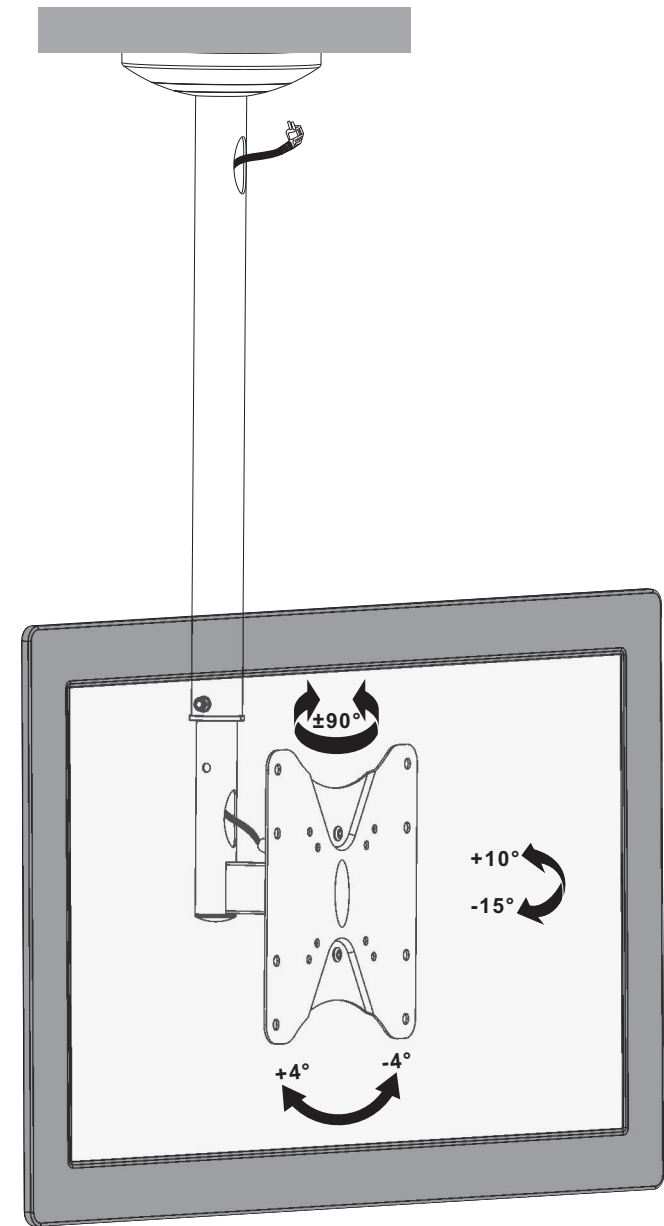


Tighten all screws but do not over tighten.

5. Installing the TV



6. Adjustment



Adjust to the desired position or tilt.